

# AXIS 214 PTZ Network Camera

*Day & night camera with pan/tilt/zoom and audio*

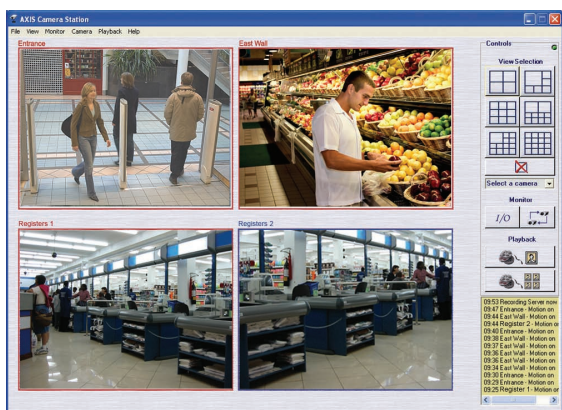
AXIS 214 PTZ Network Camera is a high performance camera for professional surveillance and remote monitoring. It combines a high quality color camera with the flexibility of remote pan/tilt/zoom operations through operator control. Incorporating an 18x optical motorized lens with auto focus, the AXIS 214 PTZ allows the user to zoom in on a small or distant object with exceptional clarity. The movability of the camera enables it to cover a wide field of view.

With automatic day/night functionality and the highly light sensitive CCD, this camera provides perfect color images in low-light conditions as well as sharp black and white pictures in extremely poor lighting conditions. The built-in audio support enables remote users to not only view, but also listen in on an area and communicate orders or requests to visitors or intruders, thereby increasing the monitoring options.

Pre- and post-alarm image buffering, video motion detection, scheduled and triggered event functionality with alarm notification together with two-way audio makes the AXIS 214 PTZ ideal for remotely monitoring people and property. This network camera is designed for use in mid-sized businesses, such as retail stores and supermarkets, transmitting images over the local area network or the Internet.



- Pan and tilt camera with 18x optical zoom and auto focus
- Automatic day and night functionality
- Two-way audio
- Simultaneous MPEG-4 and Motion JPEG
- High-resolution camera with 704x576 pixels PAL, 704x480 NTSC



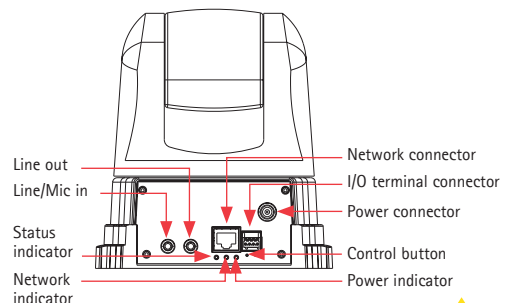
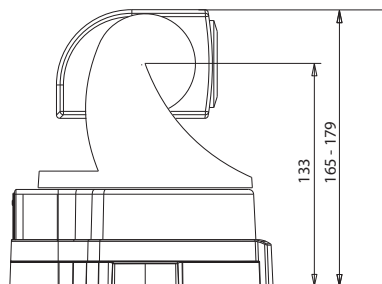
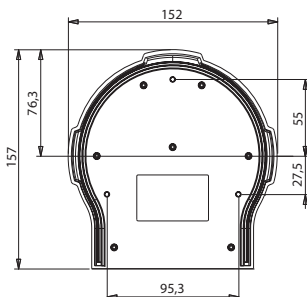
# AXIS 214 PTZ Network Camera



## Specifications

<b>Models</b>	AXIS 214 PTZ 50 Hz (PAL) AXIS 214 PTZ 60 Hz (NTSC)	<b>Connectors</b>	Ethernet 10BaseT/100BaseTX, RJ-45 Terminal block for 1 alarm input, 1 output and alternative power connection Line/mic in 3,5mm tele jack Line out 3,5mm tele jack
<b>Image sensor</b>	1/4" Sony ExView HAD CCD	<b>Processors and memory</b>	CPU: ETRAX 100LX 32bit Video processing and compression: ARTPEC-2 RAM: 32 MB, Flash: 8 MB Battery backed-up real-time clock
<b>Lens</b>	4.1 - 73.8 mm, F1.4 - 3.0, auto focus, auto day/night Focus range: 10 mm (wide) or 800 mm (tele) to infinity	<b>Power</b>	11 - 13 V DC, max 14 W
<b>Angle of view</b>	2.7° - 48° horizontal	<b>Operating conditions</b>	0 - 45 °C (32 - 113 °F) Humidity 20 - 80% RH (non-condensing)
<b>Zoom</b>	18x optical, 12x digital	<b>Installation, management and maintenance</b>	AXIS Camera Management tool on CD and web-based configuration Configuration of backup and restore Firmware upgrades over HTTP or FTP, firmware available at <a href="http://www.axis.com">www.axis.com</a>
<b>Minimum illumination</b>	Color mode: 0.3 lux at F1.4, 30IRE Black/white mode: 0.005 lux at F1.4, 30IRE	<b>Video access from web browser</b>	Camera live view, video recording to file (ASF), sequence tour for up to 20 PTZ presets or Axis video sources, customizable HTML pages
<b>Pan range</b>	± 170°	<b>Minimum web browsing requirements</b>	Pentium III CPU 500 MHz or higher, or equivalent AMD 128 MB RAM AGP graphic card, 32 MB RAM, Direct Draw, Windows XP, 2000, DirectX 9.0 or later, Internet Explorer 6.x or later For other operating systems and browsers see <a href="http://www.axis.com/techsup">www.axis.com/techsup</a>
<b>Tilt range</b>	-30° to 90°	<b>System integration support</b>	Open API for software integration available at <a href="http://www.axis.com">www.axis.com</a> , including AXIS VAPIX API, AXIS Media Control SDK, event trigger data in video stream Quality of Service (QoS) Layer 3, DiffServ Model Embedded Linux operating system
<b>Max speed</b>	Pan: 100°/sec Tilt: 90°/sec	<b>Supported protocols</b>	IPv4/v6, HTTP, HTTPS, SSL/TLS*, TCP, QoS, SNMPv1/v2c/v3 (MIB-II), RTSP, RTP, UDP, IGMP, RTCP, SMTP, FTP, ICMP, DHCP, UPnP, Bonjour, ARP, DNS, DynDNS, SOCKS, IEEE802.1X. More information on protocol usage available at <a href="http://www.axis.com">www.axis.com</a>  * This product includes software developed by the Open SSL Project for use in the Open SSL Tool kit ( <a href="http://www.openssl.org">www.openssl.org</a> )
<b>Video compression</b>	Motion JPEG MPEG-4 Part 2 (ISO/IEC 14496-2), Profiles: ASP and SP	<b>Included accessories</b>	Installation Guide, CD with User's Manual, demo software, installation and management tools, ceiling mount kit, power supply 12 V DC 3A MPEG-4 licenses (1 encoder, 1 decoder), MPEG-4 decoder (Windows)
<b>Resolutions</b>	4CIF, 2CIFExp, 2CIF, CIF, QCIF Max. 704x480 (NTSC) 704x576 (PAL) Min. 160x120 (NTSC) 176x144 (PAL)	<b>Video management software (not incl.)</b>	AXIS Camera Station - Surveillance application for viewing, recording and archiving up to 25 cameras. See <a href="http://www.axis.com/partner/adp_partners.htm">www.axis.com/partner/adp_partners.htm</a> for more software applications via partners
<b>Frame rate (NTSC/PAL)</b>	Motion JPEG: Up to 30/25 fps at 4CIF in all resolutions MPEG-4: Up to 25/21 fps at 4CIF/2CIFExp Up to 30/25 fps at 2CIF/CIF/QCIF	<b>Accessories (not incl.)</b>	Housings for adverse indoor/outdoor environments, AXIS 295 Video Surveillance Joystick AXIS 292 Network Video Decoder MPEG-4 decoder multi-user license pack
<b>Video streaming</b>	Simultaneous Motion JPEG and MPEG-4 Controllable frame rate and bandwidth Constant and variable bit rate (MPEG-4)	<b>Approvals</b>	EN55022 Class A, EN 55024, EN61000-3-2, EN61000-3-3, EN61000-6-1, EN61000-6-2 FCC Part 15 Subpart B Class A, VCCI Class A, C-tick AS/NZS CISPR 22, ICES-003 Class A, EN60950 Power Supply: UL, CSA, EN60950
<b>Image settings</b>	Compression levels: 11 (Motion JPEG) /23 (MPEG-4) Rotation: 90°, 180°, 270° Backlight compensation, white balance, color, black/white, brightness, sharpness and exposure control Overlay capabilities: time, date, text or image Aspect ratio correction De-interlace filter (4 CIF resolution)	<b>Dimensions (HxWxD) and weight</b>	179 x 152 x 133 mm (7.0" x 6.0" x 5.3") 1110 g (2,45 lbs)
<b>Pan/Tilt/Zoom</b>	20 preset positions, guard tour, sequence mode, control queue Supports Windows compatible joysticks Designed for operator control*		
<b>Shutter time</b>	1 to 1/10000 sec		
<b>Audio</b>	Two-way (full or half duplex) or one-way External microphone or line in input. Mono audio output (line level) connects to PA system or active speaker with built-in amplifier Audio compression: G.711 PCM 64kbit/s, G.726 ADPCM 32 or 24 kbit/s		
<b>Security</b>	Multiple user access levels with password protection IP address filtering, HTTPS encryption Network control IEEE 802.1X		
<b>Users</b>	20 simultaneous users Unlimited number of users using multicast (MPEG-4)		
<b>Alarm and event management</b>	Events triggered by built-in multi-window motion detection, external inputs, PTZ preset position, audio detection or according to a schedule Image upload over FTP, email and HTTP Notification over TCP, email, HTTP and external outputs Pre- and post alarm buffer of 9 MB (approx 4 min of CIF resolution video at 4 frames per sec)		

\* Not designed for continuous PTZ movements e.g. Guard tour. For continuous movement, please see Axis network dome offering



[www.axis.com](http://www.axis.com)

**AXIS**  
COMMUNICATIONS  
Make your network smarter