



801 Main Street • La Crosse, WI 54601

Our apartment homes were designed to be the finest rental residence in La Crosse, with features such as spacious floor plans, an enviable location, luxurious amenities, and a philosophy which places our residents' needs first.

Community Features

- Billiard room
- Controlled entry
- Convenient downtown location
- Elegant party room with fully furnished kitchen area and a fireplace
- Elevators, laundry rooms, trash chutes, recycling centers
- Fitness center, sauna, and whirlpool
- Game room
- Heated underground parking with convenient car wash area (one garage space included in rent)
- Professional on-site management and maintenance team

Washburn On The Park Apartments

Driving Directions



from North:

- WI-93S
- Turn left at WI-54/WI-93
- Continue WI-93
- Continue on US-53 S
- Merge onto I-90 W/US-53 S via the ramp to Minnesota
- Take exit 3 to merge onto US-53 S/WI-35 S toward La Crosse
- Turn left at WI-35
- Turn right at Main St.
- End at 801 Main St.

from South:

- WI-35 N
- Slight right at W Ave S/WI-35
- Turn left at Main St
- End at 801 Main St

from West:

- Head south on US-12/WI-131 toward WI-16
- continue to follow WI-131
- Turn right to merge onto I-90 W toward La Crosse
- Take exit 3 to merge onto US-53 S/WI-35 S toward La Crosse
- Turn left at WI-35
- Turn right at Main St
- End at 801 Main St

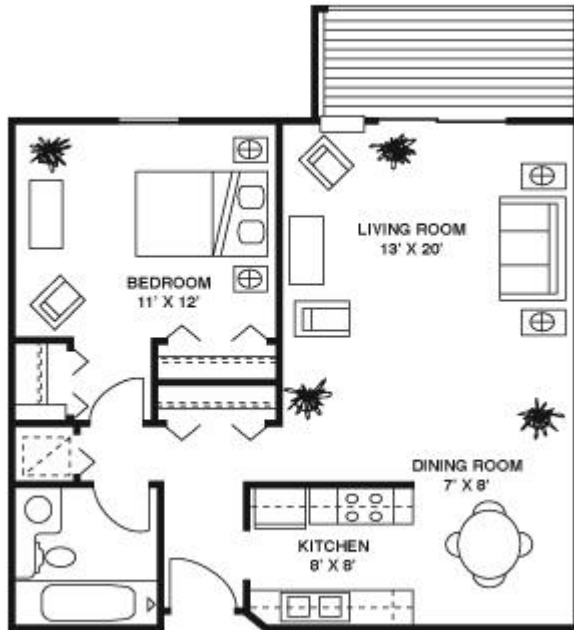
from East:

- South on US-12/WI-131 toward WI-16
- Continue to follow WI-131
- Turn right to merge onto I-90 W toward La Crosse
- Take exit 3 to merge onto US-53 S/WI-35 S toward La Crosse
- Turn left at WI-35
- Turn right at Main St
- End at 801 Main St

1 Bedroom / 1 Bath - Furnished

Sq. Ft.: 752

Rent: \$1,480 - \$1,600 (Call 608-782-6400 to verify current rent)



Floor plan Features

- Administrative services available including: fax machine, copy machine, postage services and notarizing services
- Complete bedroom set
- Expanded basic cable
- Fully equipped kitchen
- Heat, water, trash removal and electricity included in rent
- High-speed internet available & desk
- Linens and restroom supplies
- Living room and dining furnishings
- Local telephone service
- Queen sized sleeping accommodations
- Weekly maid service available

Features may vary by apartment

1 Bedroom / 1 Bath

Sq. Ft.: 752

Rent: \$835 - \$985 (Call 608-782-6400 to verify current rent)



Floor plan Features

- Abundant closet space
- Fully equipped kitchen featuring a frost-free refrigerator with ice maker, dishwasher and microwave
- Heated underground parking stall included in rent
- Plush wall-to-wall carpet and ceramic tile baths
- Private patio/balcony
- Separate dining area
- Solid oak cabinetry, trim, and doors
- Vaulted ceiling and wood burning fireplace (third floor homes only)
- Washer/dryer hook-ups

Features may vary by apartment

2 Bedroom / 2 Bath

Sq. Ft.: 1,003 - 1,087

Rent: \$1,030 - \$1,350 (Call 608-782-6400 to verify current rent)



Floor Plan Features

- Abundant closet space
- Fully equipped kitchen featuring a frost-free refrigerator with ice maker, dishwasher and microwave
- Heated underground parking stall included in rent
- Plush wall-to-wall carpet and ceramic tile baths
- Private patio/balcony
- Separate dining area
- Solid oak cabinetry, trim, and doors
- Vaulted ceiling and wood burning fireplace (third floor homes only)
- Washer/dryer hook-ups

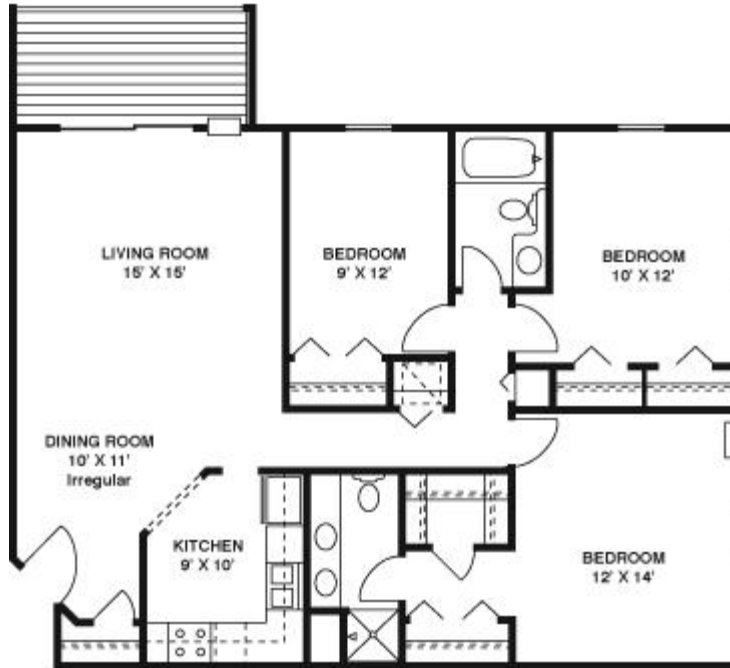
Features may vary by apartment

Washburn On The Park Apartments – 3 Bedroom/2 Bath Floor Plan

3 Bedroom / 2 Bath

Sq. Ft.: 1,231

Rent: \$1,625 - \$1,925 (Call 608-782-6400 to verify current rent)



Floor Plan Features

- Abundant closet space
- Fully equipped kitchen featuring a frost-free refrigerator with ice maker, dishwasher and microwave
- Heated underground parking stall included in rent
- Plush wall-to-wall carpet and ceramic tile baths
- Private patio/balcony
- Separate dining area
- Solid oak cabinetry, trim, and doors
- Vaulted ceiling and wood burning fireplace (third floor homes only)
- Washer/dryer hook-ups

Features may vary by apartment